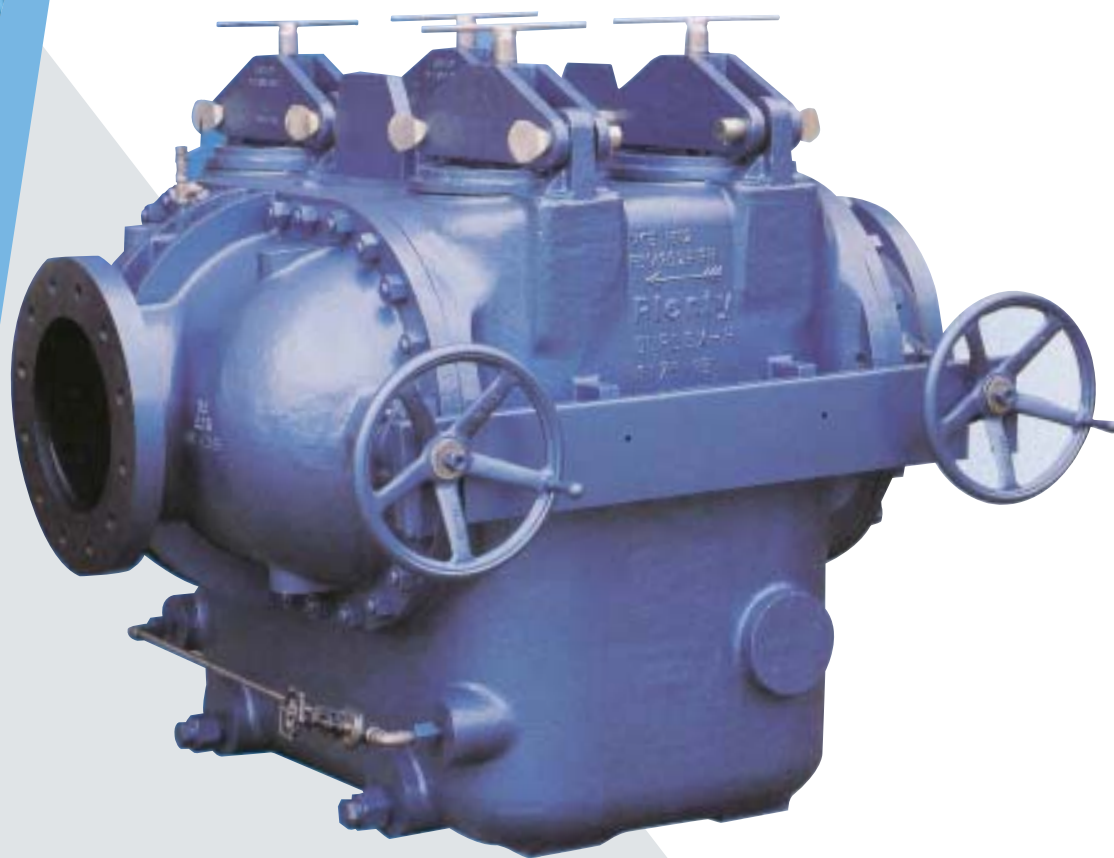




Duplex H-Type Strainer

8" - 36" Bore



DUPLEX H-TYPE STRAINER

8" - 36" BORE

The Duplex H-Type strainers are designed for larger size applications where interruption of the flow for basket cleaning is not permitted. This range of duplex strainers employs a simple method for changeover, using two sliding gate valves, operated manually by screwed shafts via an external handwheel. Operating shafts are interconnected for **simultaneous operation, thus eliminating any possibility of completely shutting off the liquid flow.** Provided with a valve position indicator showing which chamber of the filter is on stream. Access to the filter baskets is through quick release covers. The light weight baskets are quickly and easily removed for cleaning without the need for any tools, lifting gear or specialised knowledge and with minimum down time.



Duplex H-Type 8" - 36" Bore

FEATURES

- Multiple lightweight baskets for easy handling
- Sliding gate type valves with positive compression seating
- Stepped angled basket seat for minimum pressure drop and positive basket seating
- Robust basket support cages complete with replaceable mesh inserts (when required) reducing spares holding and operating cost
- Quick release covers for convenient basket removal without the need for tools or lifting gear
- Resilient cover 'O' seals
- Filtration - 2mm dia. perforations down to 45 microns (coarser filtration available)
- External valve position indicator showing which chamber is on stream
- Replaceable valve seats
- Synchronised chain drive
- Standard in cast iron and cast steel, all fitted with baskets and inserts as required
- External pressure equalising valve
- Flanged to ASME Class 250FF and Class 300RF, can be drilled to ASME Class 150, BS tables and DIN standards

OPTIONS

- Internal protective coatings
- Automatic valve changeover operation
- Cathodic protection for seawater service
- Reinforced baskets to withstand high differential pressures
- Automatic backflushing facilities for both suction and discharge duties
- Magnetic element assemblies
- Pleated baskets for higher filtration area
- DP gauges and switches
- Flanged vents and drains

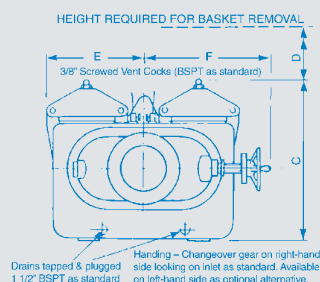
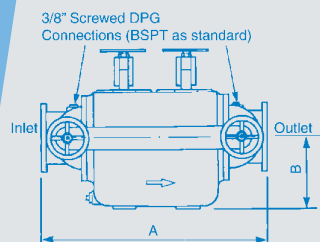
SPECIALS

- Cast or fabricated units for higher working pressures

Size (Bore)	Model	No. of	A	B	C	D	E	F	Gross Basket	Weight	
In	mm	No.	mm	mm	mm	mm	mm	mm	Area (per chamber) cm ²	kg	
8	50	HN-8	2	1000	419	902	238	568	692	3225	1250
10	75	HS-10	2	1089	610	1112	447	606	738	5160	1400
10	100	HL-10	4	1502	457	1067	451	619	838	7485	2250
12	150	HN-12	4	1502	457	1067	451	619	838	7485	2250
14	200	HS-14	4	1502	457	1067	451	619	838	7485	2250
14	200	HL-14	4	1743	781	1473	769	762	1067	12905	4000
16	200	HN-16	4	1743	781	1473	769	762	1067	12905	4000
18	200	HN-18	4	1743	781	1473	769	762	1067	12905	4000
20	200	HS-20	4	1743	781	1473	769	762	1067	12905	4000
20	200	HL-20	8	2410	870	1635	830	1240	1565	25805	9500
24	200	HS-24	8	2410	870	1635	830	1240	1565	25805	9500
24	200	HL-24	12	2600	870	1700	1220	1525	1800	38710	11100
28	200	HN-28	12	2600	870	1700	1220	1525	1800	38710	11100
30	200	HN-30	12	2600	870	1700	1220	1525	1800	38710	11100
32	200	HN-32	12	2600	870	1700	1220	1525	1800	38710	11100
36	200	HN-36									

DETAILS ON APPLICATION

Approximate dimensions only. Tolerance: Plus or Minus 1/8" (3 mm)



DESIGN DATA

Body, Covers & Vales Housings	Flanges	Max. Working Pressure	Hyd. Working Pressure	Working Temp.
Cast Iron BS 1452~260	ASME 250FF	150 PSIG	225 PSIG	(0 to 100)°C
Cast Steel BS 1504~161				
480/ASTM~216~WCB	ASME 300RF	300 PSIG	450 PSIG	(0 to 100)°C

STANDARD INTERNALS SERVICE

	Valves	Shafts	Valve Seats	Drive Nuts	Element
Oil	Cast Iron BS1452 ~ 260	Mild Steel BS970 ~ 070M20	Cast Iron BS1452 ~ 260	Cast Iron BS1452 ~ 260	Mild Steel BS970 ~ 070M20 or Stainless Steel AISI 316L
Fresh Water	Cast Iron BS1452 ~ 260	Stainless Steel BS970 ~ 316S16	Cast Iron BS1452 ~ 260	Cast Iron BS1452 ~ 260	Stainless Steel AISI 316L
Sea Water	Gunmetal BS1400LG4	Stainless Steel BS970 ~ 316S16	Gunmetal BS1400LG4	Gunmetal BS1400LG4	Stainless Steel AISI 316L or Monel 400

Plenty House, Hambridge Road, Newbury, Berkshire, RG14 5TR

Telephone +44 (0)1635 42363 Facsimile +44 (0)1635 49758 Email filters@plenty.co.uk www.plenty.co.uk

Our policy is one of continuous improvement and we reserve the right to alter any details of our products at any time prior to notice. Plenty is a division of SPX Process Equipment.